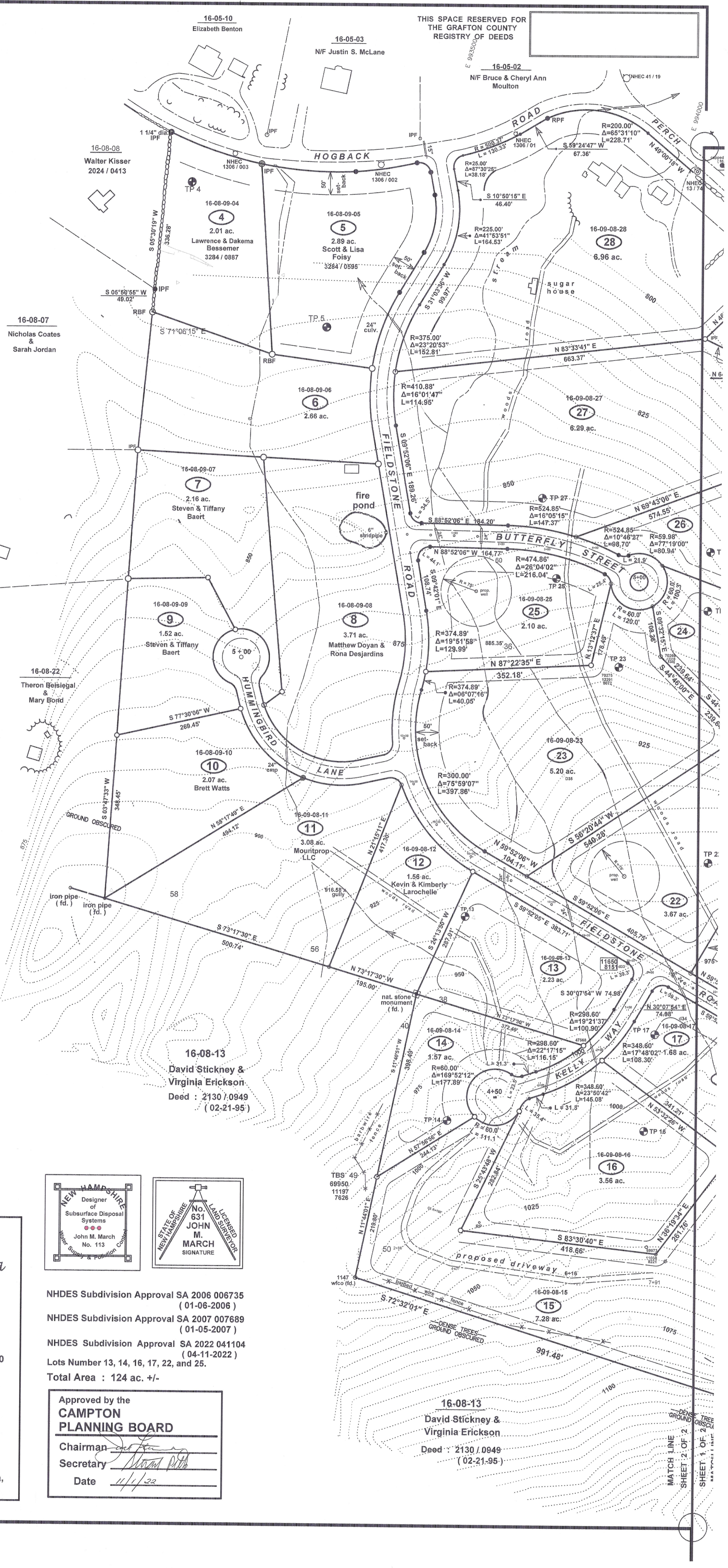


THIS SPACE RESERVED FOR THE GRAFTON COUNTY REGISTRY OF DEEDS



- REFERENCE PLANS**
- "Partridge Knoll, Campton, NH, Phase 1, Lots 1-15", Surveyed May-June 1978 by John March, Campton, NH.
 - "Birch Hill, Campton, NH, Property of Brown & Harris Realty Trust", surveyed June 1979 by John March, Campton, NH.
 - "Proposed BLA for Bernard & Addie Moulton, Campton, NH", surveyed June 1990 by R. Sabourin.
 - "Maple Heights, Campton, NH, Phases I and II, Lots 1-14", surveyed June 2006 by Mountain Mapping, Campton, NH.
 - "BLA between David Moulton and Chris & Paula Kelly, Campton, NH", surveyed Dec. 2021 by Tony Randall.



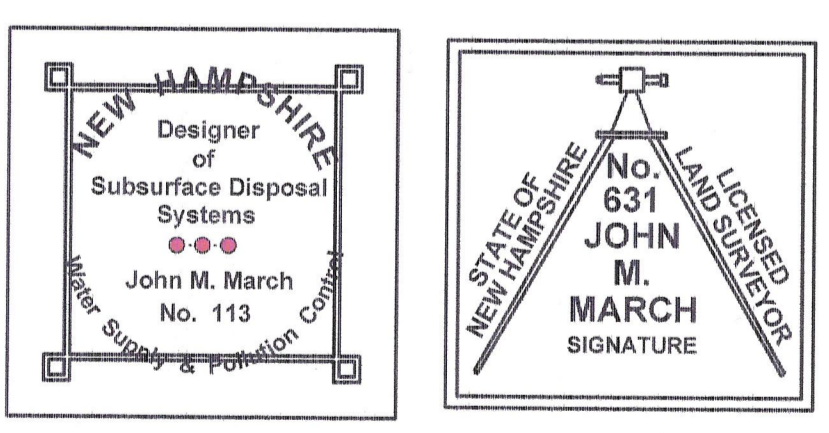
- LEGEND**
- stone wall
 - iron pipe or pin
 - wire fence
 - nat. stone monument
 - drainage
 - util. pole
 - poorly drained soils
 - calculated pt.

Sheet 2 of 2

SUBDIVISION SURVEY PLAT
MAPLE HEIGHTS
 Perch Pond Road & Hogback Road
 Campton, N.H.
 Phase III, Lots 13-28
 Developers : Chris and Paula Kelly
 Deed : Bk. 2416, pg. 748 (09-02-1999)

0 50 100 200 300 400
 SCALE in FEET

Zone : RR (Rural Residential)
 RC (River corridor Protection)
 Survey & Plan : MOUNTAIN MAPPING
 Campton, N.H. 03223
 Date : April 2022
 Rev. 10-10-2022 : Show corrected Lot 28 area,
 now 6.96 ac.



NHDES Subdivision Approval SA 2006 006735 (01-06-2006)
 NHDES Subdivision Approval SA 2007 007689 (01-05-2007)
 NHDES Subdivision Approval SA 2022 041104 (04-11-2022)
 Lots Number 13, 14, 16, 17, 22, and 25.
 Total Area : 124 ac. +/-

Approved by the
CAMPTON PLANNING BOARD
 Chairman
 Secretary
 Date 4/1/22

16-08-13
 David Stickney &
 Virginia Erickson
 Deed : 2130 / 0949
 (02-21-95)

MATCH LINE
 SHEET 2 OF 2
 SHEET 1 OF 2